

# A Flexible, **High-Throughput** Approach to **Single-Cell Phenotyping** and **Transcriptomics**

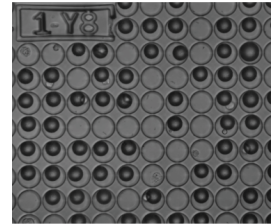
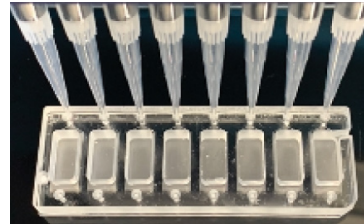
## Correlate Single-Cell Function and Gene Expression with a Streamlined Workflow

Take the guesswork out of functional studies by directly linking imaging and gene expression data from the same individual cells.

Our platform enables the exploration and correlation of both phenotypic and molecular characteristics at single-cell resolution within an integrated, end-to-end workflow.

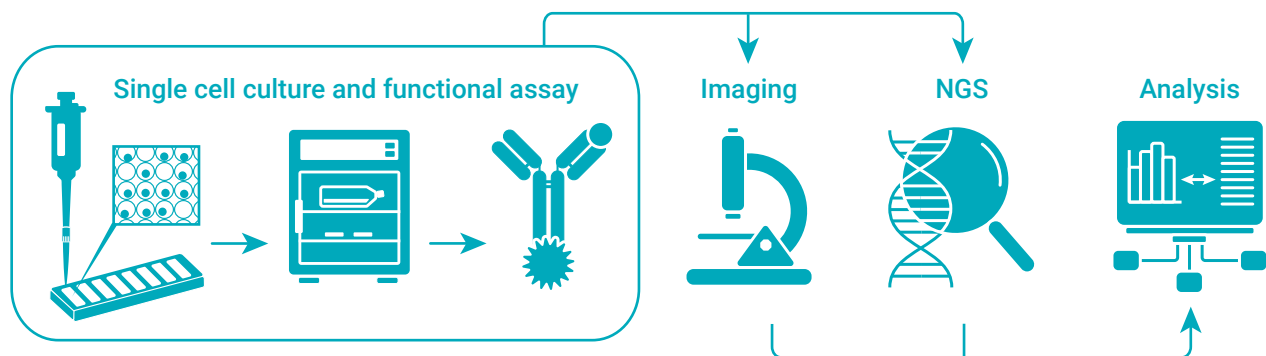
Our FLEX chip captures individual cells in a microscope-compatible picowell array, enabling seamless integration of a cellular assay of your choice. Perform cell culture, functional assays, and cell imaging directly on the chip, then conduct molecular analyses, like RNA-seq, on the same sample—all while preserving cell-of-origin information.

Our free analysis platform links imaging data to single-cell transcriptomic profiles using barcode mapping, ensuring precise correlation for every picowell.



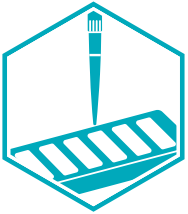
## Technology Highlights

- **Bring-Your-Own-Assay (BYOA)**: Seamless integration with your existing imaging and molecular workflows
- Perform **live functional assays on >100,000 cells** in a single run
- Choose from a **broad range of genomic workflows**
- **No custom equipment required**
- Leverage our team of **FLEXperts** to adapt the platform to your needs



# Flexomics Workflow

By coupling live cell analysis and single cell transcriptomics in a high-throughput manner, our flexible platform opens the door to the next generation of single cell analysis and can easily be applied to a broad range of biological systems



## 1- LOAD

- Each easy-to-use FLEX picowell consumable contains ~1 million mapped wells
- No custom equipment required
- 8-site consumable for processing of up to 8 samples in parallel
- Coming soon: 1-site consumable for large-scale analysis of a single sample



## 2- CULTURE

- Cells cultured on the FLEX consumable maintain high viability for 4+ days
- Incubate the FLEX consumable in your standard CO<sub>2</sub> incubator
- No extra gadgets required for media perfusion



## 3- BRING YOUR OWN ASSAY (BYOA)

- Hassle-free customization of molecular and cellular workflows
- The FLEX consumable supports many types of miniaturized functional assays including cell-cell interaction, neoantigen discovery, immunofluorescence, cytokine signaling, proliferation/survival assays, and more



## 4- IMAGE

- The FLEX consumable is compatible with conventional inverted fluorescence microscopes
- Enables live cell image capture across multiple timepoints



## 5- SEQUENCE

- Each FLEX consumable is pre-loaded with optically-encoded RNA capture beads for easy cell labeling and tracking
- FLEX single cell barcoding is compatible with short-read and long-read sequencing platforms
- Choose from whole transcriptome or custom targeted RNA-sequencing panels



## 6- ANALYZE

- Free access to the FLXplorer analysis platform is included with each consumable purchase
- Easily view, filter, plot, and export correlated imaging and sequencing data directly from the FLXplorer platform
- Leverage our team of FLEXperts for help with additional data analysis needs

